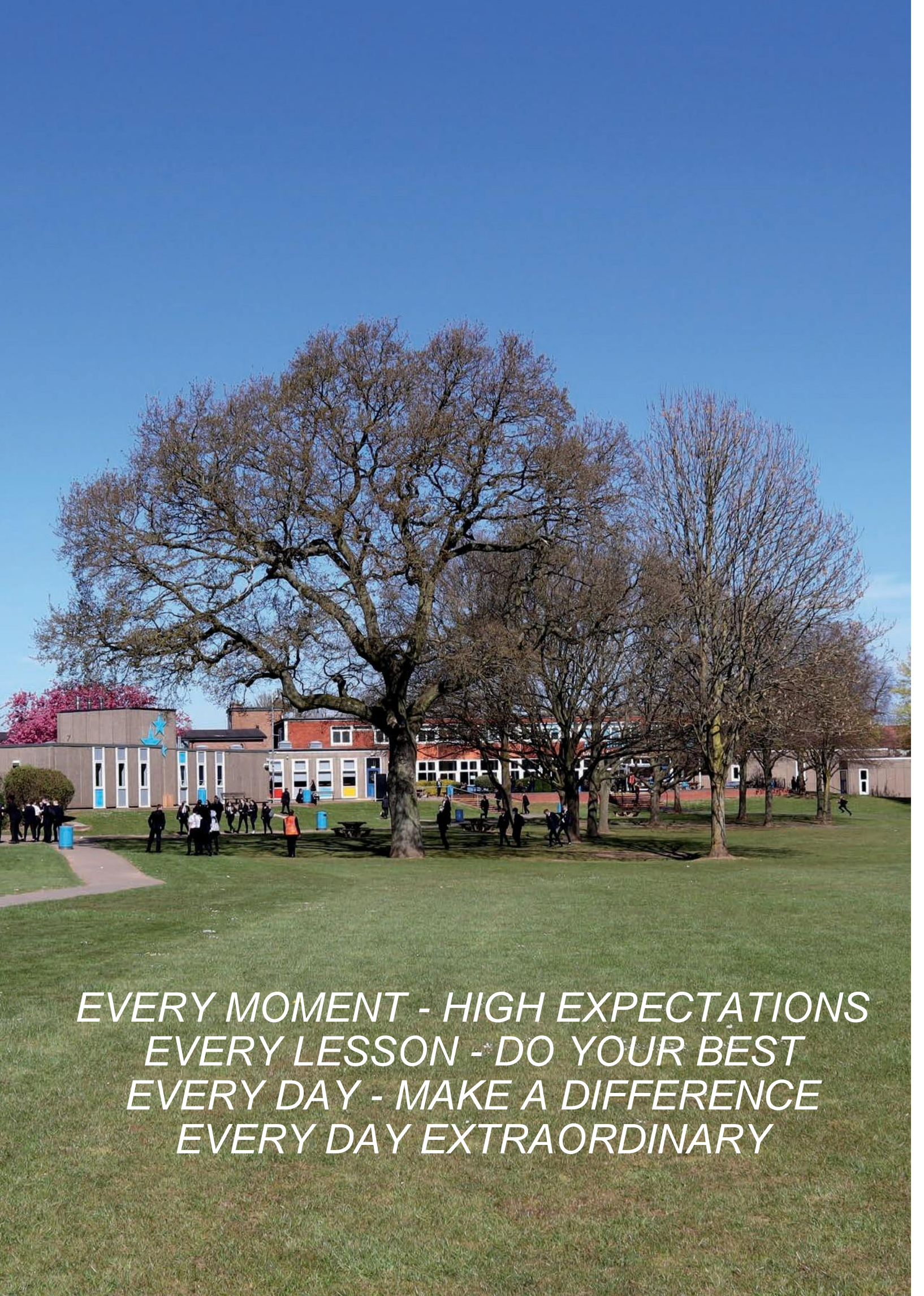




Ash Green School

Open Evening 2025





*EVERY MOMENT - HIGH EXPECTATIONS
EVERY LESSON - DO YOUR BEST
EVERY DAY - MAKE A DIFFERENCE
EVERY DAY EXTRAORDINARY*

Welcome

Dear parents and carers,

I am delighted to welcome you to Ash Green School. We are looking forward to working closely with all our new students and their families in order to ensure that the move from primary to secondary education is as effective as possible.

At the core of every decision we make, will be your children. I have been very fortunate to have had a great deal of success as a Headteacher. A key element of that success has been working collaboratively and securing the support of parents. I genuinely look forward to building that positive relationship with you; together we will make sure all of our children have a bright future to look forward to.

At Ash Green School we foster a love of life-long learning. We provide a broad, balanced and fulfilling curriculum. We also provide a diverse enrichment programme which we encourage all students to participate in. In addition to this, our team of dedicated staff will work tirelessly in partnership with you to ensure your child reaches their potential.

Recognising that all our students have different skills and will grasp concepts and retain knowledge in many ways is fundamental to helping us meet all our students' needs. Providing lessons that inspire and engage, listening, and responding to students' ideas and opinions is at the heart of what we do. Ensuring every student is known and feels valued through relationships built on mutual respect leads to a happy and safe place to learn.

Our motto is 'Every Day Extraordinary' and we believe that hard work and doing things to the very best of your ability lead to success. To us, the little things matter. Getting to school on time, dressing smartly, bringing the correct equipment, and showing respect for all are four simple things everyone can do. Academic success is important, but the skills students learn and the character traits of resilience, respect, and resourcefulness that they develop along the way ensures that they are well prepared for success during their time at Ash Green School.

If you do have any further questions this evening, our dedicated team of staff will be available to answer these for you.

Mr Fuzel Choudhury
Principal





Event Information

Throughout the evening, you will find a variety of activities delivered by our subject teams across the school. These will provide an insight into the curriculum at Ash Green School. We encourage children to participate in the activities and complete their 'Star Card' before leaving this evening. All children who complete the activities will be entered into a prize draw to win a fantastic chocolate hamper.

To assist you in finding your way around the school, we have a team of student helpers who will act as guides for the evening.

Tours of the school begin at 4:15pm.

There will be a presentation by the Principal and Senior Leadership at 5pm.

This presentation will be repeated again at 6pm.

A bell will ring at 4:55pm and 5:55pm to act as a warning bell for the beginning of each presentation.

A bell will ring at 6:50 to provide a 10 minute warning for the end of the evening.

Emergency Evacuation Procedures

In the event of an emergency, the fire alarm will sound continuously. Doors in corridors will close automatically. Use any staircase to descend from the first floor to the ground floor. Do not use the lift in the Michael Dixon building. Leave the building by the nearest emergency exit and follow the instructions of staff members. Do not re-enter the building until it is advised that it is safe to do so.

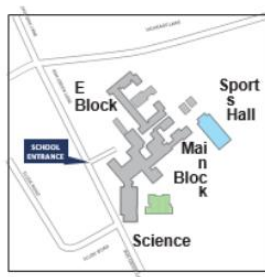
Event Information

Subject	Room	Activity
Principal's Presentation 5pm & 6pm	Community Theatre	Introduction to Ash Green School by Mr Choudhury and senior leadership team
Geography	SS5	Geographical landmarks quiz
History	SS3	Bayeux Tapestry Jigsaw, Mix and Match Crime and Punishment, Famous Historical Faces.
Religious Studies	SS4	Religion symbol match up Religious artifacts.
Computer Science	CS1	TBC - NHQ
Business Studies	L1	Market research activity.
Drama	P1	Set design/ Costume and Prop try on/ Observing DM Students
Dance	Dance Studio	Line dance routine and turn board practical
PE	Sports Hall	Circuit of Sports activities (Trampolining, table tennis, badminton, basketball)
Inclusion Team	Inclusion Hub	Meet the inclusion team
Art & Graphics	A2	Jon Bargeman inspired doodle activity
Textiles	A3	Fashion illustration collage activity
English	E2 and E3	Describing a character using language methods and extensive vocabulary.
Music	Music	Explore the range of musical instruments used in music lessons
Maths	M5, M6	M5-Explore textbooks/curriculum M6- Mathematical problem solving activities
Science	S5, S6	Take part in a variety of scientific experiments
Languages	L2	French Café

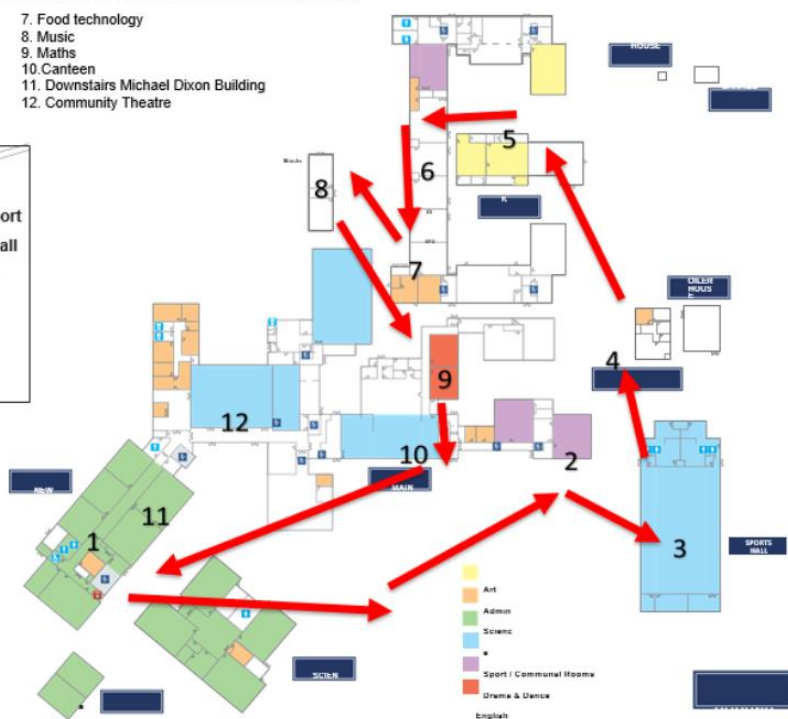
Please follow the suggested route using the map below to avoid congestion around the school site. You will be able to experience all subject areas regardless of your route starting point.

1. Upstairs Michael Dixon Building
2. Drama & Dance
3. Sports Hall
4. Inclusion
5. Art
6. English

7. Food technology
8. Music
9. Maths
10. Canteen
11. Downstairs Michael Dixon Building
12. Community Theatre



- Staff Toilets
- Boys Toilets
- Girls Toilets
- Disabled
- Toilet/Medical
- Room/Fire
- Escape
- Stair
- Lift




- Art
- Admin
- Science
- Sport / Communal Rooms
- Drama & Dance
- English



Ethos & Purpose

Ash Green Values

At Ash Green School, we live out our values in everything we do. Our Ash Green values are:

	Global Citizenship We demonstrate respect and tolerance for everyone in our environment, knowing that a strong community spirit will benefit us all. Together we are greater than the sum of our parts.
	Resilience We embrace challenges and we're aware that setbacks & errors are just opportunities to improve. Our potential is not fixed – some elements take more time to learn & master than others.
	Aspiration We strive to do our best by demonstrating leadership, dreaming big and aiming high. Our future selves will thank us for the effort we put it now.
	Creativity In lessons, a problem to be solved can be seen as new learning. Creativity and original thinking is rewarded. Students are consistently encouraged to ask questions & to master their creative talents across the curriculum.
	Excellence Our aspirations to be great is not limited to only academia, but everything we do. This can relate to drama, sport, music or in day to day interactions by displaying exemplary levels of common courtesy – we aim to be the best we can be.

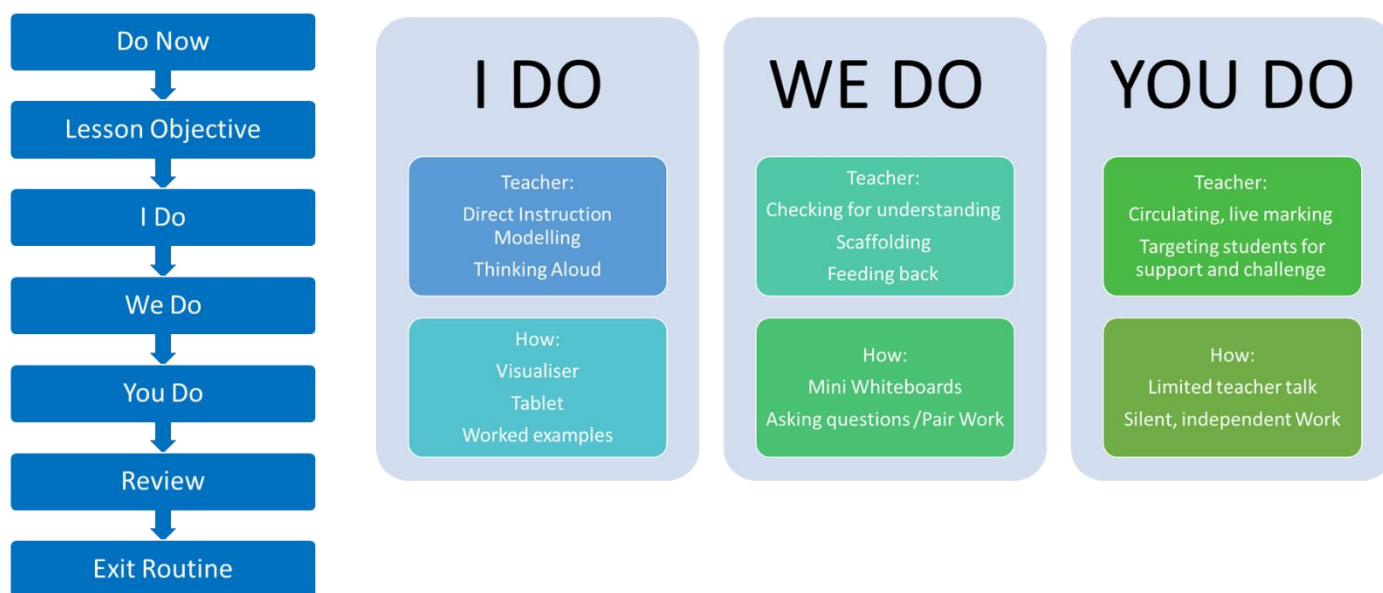
‘The AGS Way’

At Ash Green School (AGS) our purpose is to equip **all** our students with the powerful knowledge and transferable skills they need to succeed in our global community. Every lesson, we uphold high expectations, and we support students to do their best.

Our AGS Lesson structure uses key strategies supported by cognitive and metacognitive science to teach our ambitious curriculum to **all** students.

An AGS Lesson

At Ash Green every lesson is structured in the following way to provide consistency and routine for all learners.



At the heart of all learning is assessment so that the teacher can identify progress and understanding throughout the lesson. This is achieved through the use of mini whiteboards, recall ‘do now’ activities



Transition

At Ash Green School we work extremely hard to ensure that your child settles in quickly; our personalised approach ensures that they maximise their potential.

Moving on from a Primary School can be an apprehensive time, for both children and their parents. We will offer a tailored transition programme to ensure that the transition process is simple and seamless. Our staff will work hard to alleviate any fears regarding starting at a new School and encourage a feeling of excitement and anticipation.

We work hard to get to know students before they join our School. Throughout the Summer term we will carry out interviews with Year 6 teachers collecting valuable information about our new students, to get to know their needs and aspirations, and to enable us to tailor their experience.

We look forward to welcoming all year 6 students who will be joining us in September 2026 to a full on-site transition day at Ash Green on Wednesday 8th July 2026.

During the first week of the Autumn term, we will carry out an extended induction programme; the aim is to help build friendships, ensure there are familiar faces in every lesson, and encourage teamwork in class as the curriculum is introduced. We will also carry out a Year 7 settling in survey in the first few weeks at Ash Green to ensure any early concerns are addressed and students feel supported.

During Year 7, students broadly follow the National Curriculum with an unrelenting focus on English, Maths and Science. We teach Year 7 students in mixed ability groups for all subjects. Our teachers are skilled in stretching and challenging all students, regardless of ability to ensure that our students create a strong academic foundation setting them up perfectly for GCSEs and formal examinations.



Enrichment

We offer students a wide-ranging enrichment programme to develop their passions and interests as well as gain greater confidence and self-belief.

Our extra-curricular sessions include After-School Clubs, Lunchtime Clubs, and Year 11 Intervention Sessions. Most after school clubs run between 3.10pm and 4.10pm. Year 11 intervention runs until 4:30pm.

In addition, there are opportunities to enrich the curriculum with regular trips, visits, performances, sports fixtures and guest speakers across all subjects.



Please feel free to ask
our staff any questions
you have.
We look forward to
seeing you again.





**ASH GREEN
SCHOOL**
*Creative
Education
Trust*

Ash Green School, Ash Green Lane
Coventry, CV7 9AH
Call 024 7636 6772
Email enquiries@ashgreenschool.org.uk
Visit www.ashgreenschool.org.uk